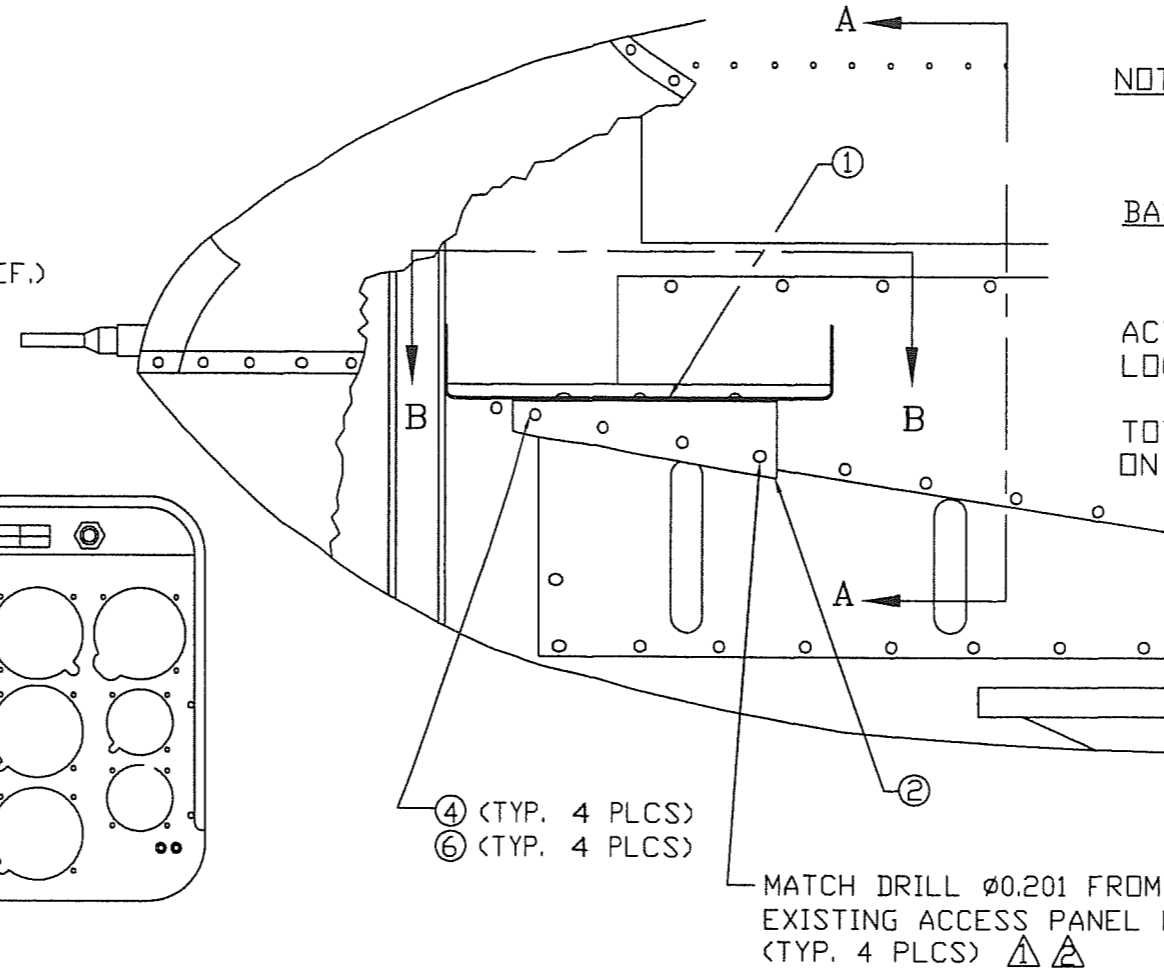
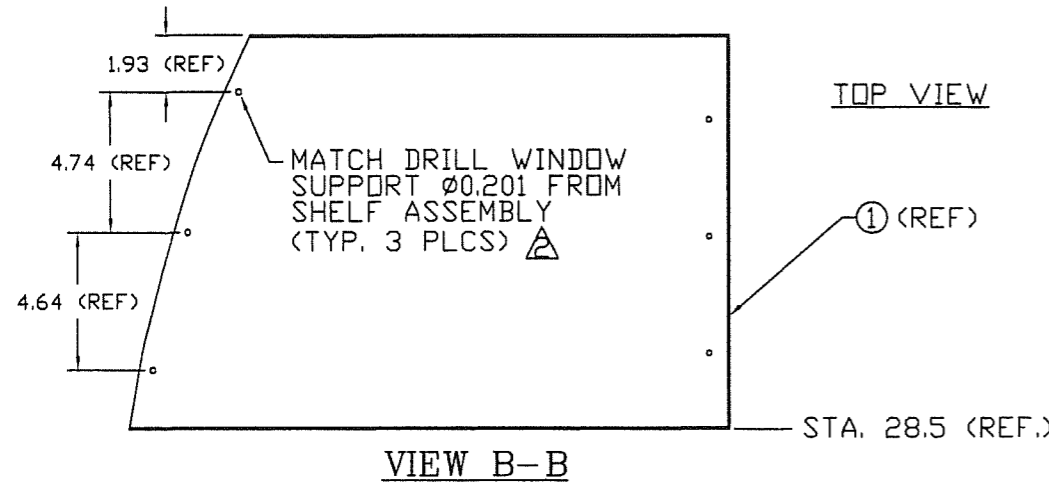


NOTES:

- ▲ USING INDICATED HARDWARE INSTALL BRACKET 206ET-1010-1 TO SHELF.
- ▲ MATCH DRILL TO EXISTING FASTENER LOCATIONS IF POSSIBLE, ASSURE A MINIMUM EDGE TO HOLE DISTANCE OF 2X THE HOLE DIAMETER. LEVEL SHELF PRIOR TO MATCH DRILLING.

SHEET	REV	ECO	DATE	DESCRIPTION	BY	APR	CHK
1,2	A		01/04/93	REMOVED 206ET-1020 NET		REB	REB
1,2	B		02/09/93	ADDED NOTE REF. STATIC LINE		REB	REB
1	C		09/14/00	DELETED PARTS LIST, PAGE 2 AND -2 ASSY, ADDED ITEM NUMBERS		MR	LS
1		1	10/30/2012	ADDED NOTE BLOCK BELOW	REB	REB	LS



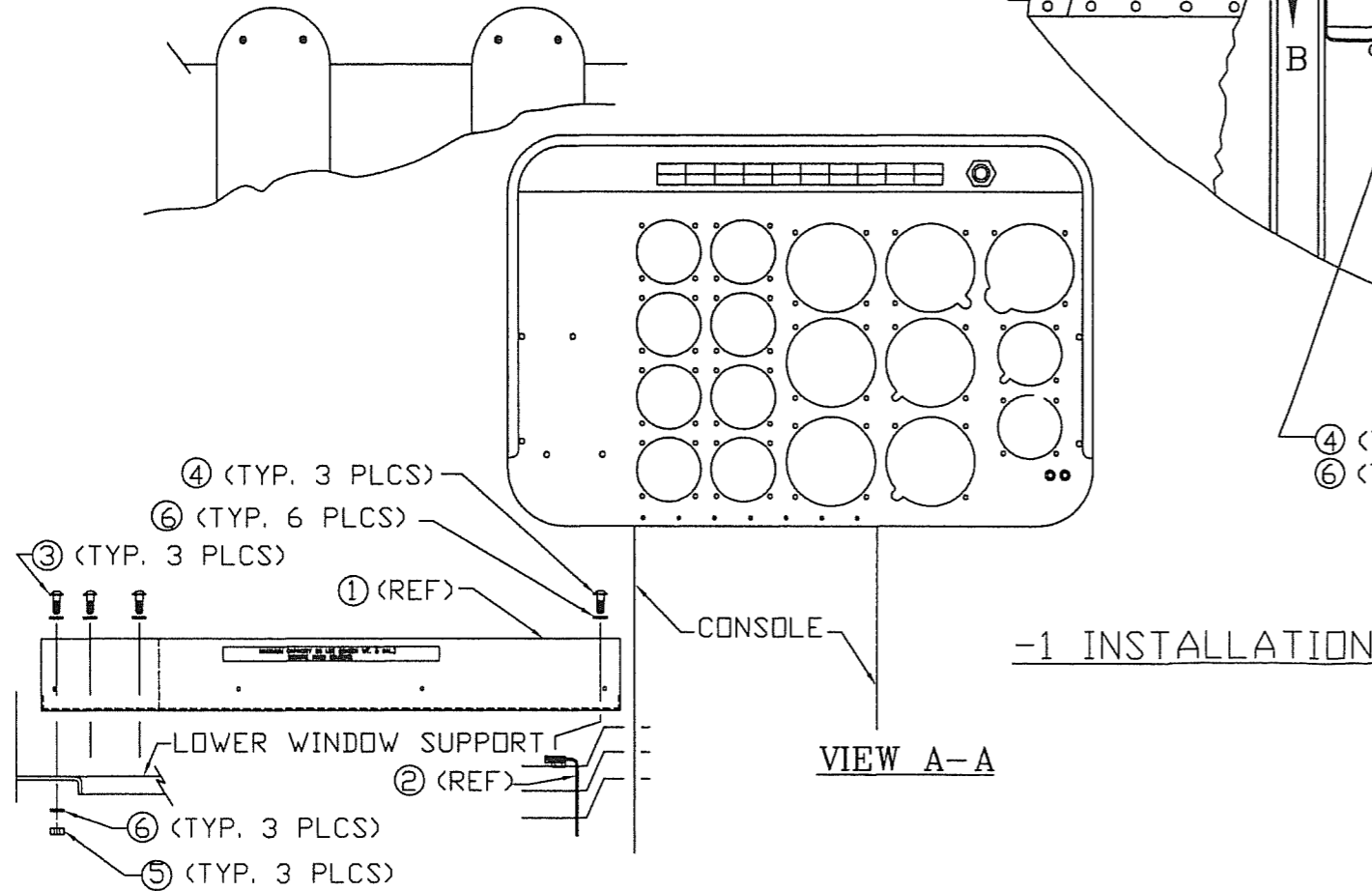
NOTE: EQUIPMENT PREVIOUSLY INSTALLED TO CONSOLE SIDE PANEL MAY REQUIRE RELOCATION.

BASIC -1 SHELF INSTALLATION DATA:

WEIGHT: 2.9 LBS.
 FUSELAGE STA.: 20.8 IN.
 BUTTLINE: -11.7 IN.

ACTUAL INSTALLATION WEIGHT AND LOCATION MUST BE VERIFIED.

TOTAL WEIGHT OF COMPONENTS INSTALLED ON OR TO SHELF MUST NOT EXCEED 25 LBS.



NOTE: STATIC LINE, USE EXISTING CLAMP ON CENTER SCREW

-CONFIDENTIAL INFORMATION-
 THE INFORMATION AND DATA CONTAINED HEREIN IS PROPRIETARY AND IS SUBMITTED IN CONFIDENCE; AND SHALL NOT BE DISCLOSED, USED OR DUPLICATED FOR ANY PURPOSE WHATSOEVER WITHOUT THE PRIOR WRITTEN PERMISSION OF PARAVION TECHNOLOGY, INC.

PROTO
 N/C

Paravion® Technology Inc.		TITLE SHELF PANEL INSTALLATION		DRAWING NO. 206ET-100	
DIMENSIONS IN INCHES					
TOLERANCES EXCEPT WHERE NOTED:					
.X	= ± .1				
.XX	= ± .05				
.XXX	= ± .010				
ANGLES = ± 1°					
BY RHSM	APRVD. REB	CHK'D REB	DATE 10/19/92	REV C	ECO 1
DO NOT SCALE DRAWING					SHEET 1 OF 1
© 2000 PARAVION TECH., INC. PARAVION IS A TRADEMARK OF PARAVION TECHNOLOGY, INC.					