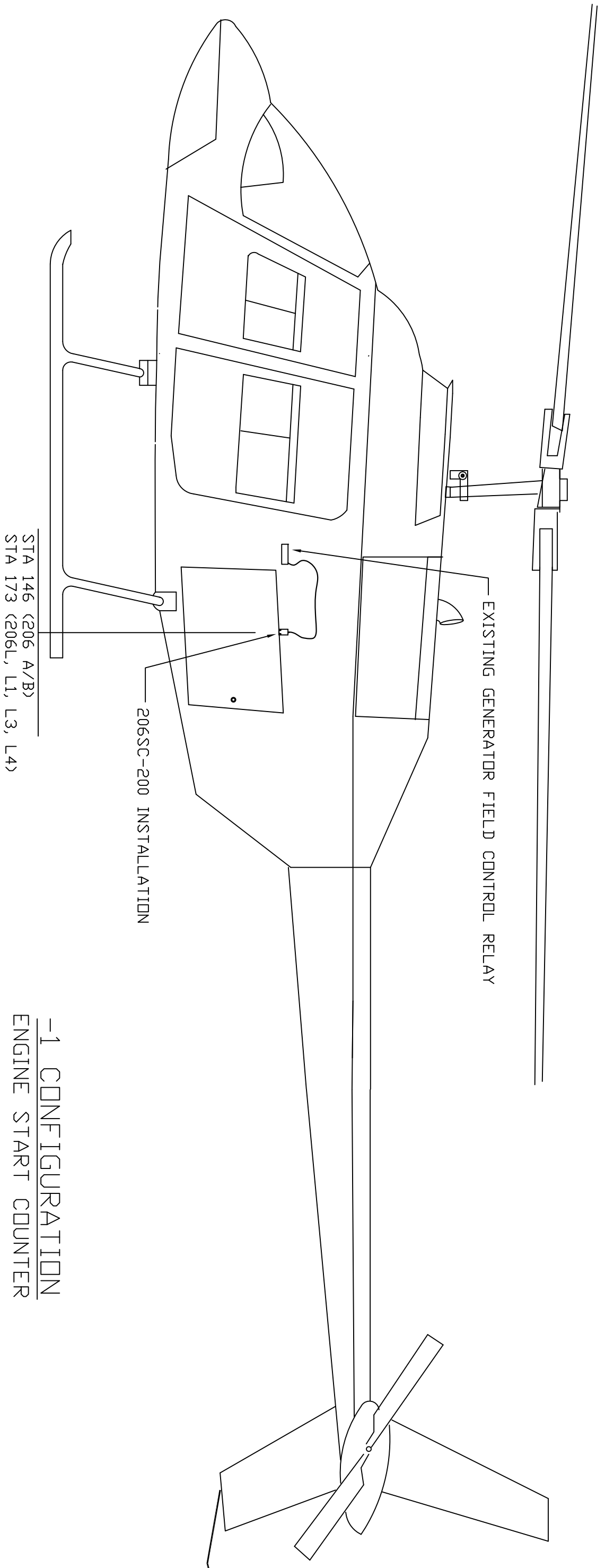


CONFIGURATION	MODEL EFFECTIVITY	INSTALLATION
206SC-100-1	206A/B, L, L1, L3, L4	206SC-200

ECD	SHEET	REV	DATE	DESCRIPTION	APR	CHK



-1 CONFIGURATION
ENGINE START COUNTER

Paravion® Inc. Technology		TITLE SYSTEM CONFIGURATION		DRAWING NO. 206SC-100	
DIMENSIONS IN INCHES TOLERANCES EXCEPT WHERE NOTED: .X = ± .1 .XX = ± .05 .XXX = ± .010 ANGLES = ± 1°		DRAWN BY GP	APPRVD. BY ECO	CHK'D BY GP	DATE 12/31/02
DO NOT SCALE DRAWING		REV N/C	SHEET 1 OF 1		
© 2000 PARAVION TECH, INC. PARAVION IS A TRADEMARK OF PARAVION TECHNOLOGY, INC.					

THE INFORMATION AND DATA CONTAINED HEREIN IS PROPRIETARY AND IS SUBMITTED IN CONFIDENCE; AND SHALL NOT BE DISCLOSED, USED OR DUPLICATED FOR ANY PURPOSE WHATSOEVER WITHOUT THE PRIOR WRITTEN PERMISSION OF PARAVION TECHNOLOGY, INC.

-CONFIDENTIAL INFORMATION-

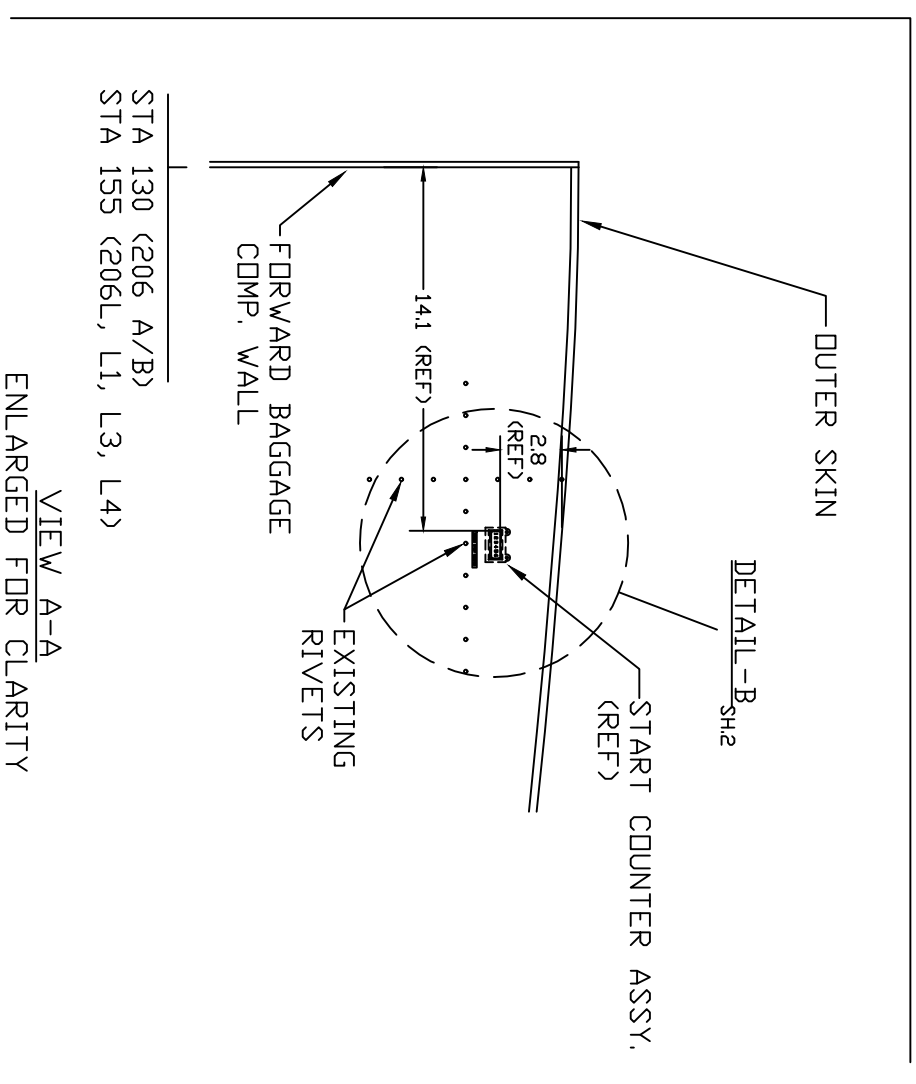
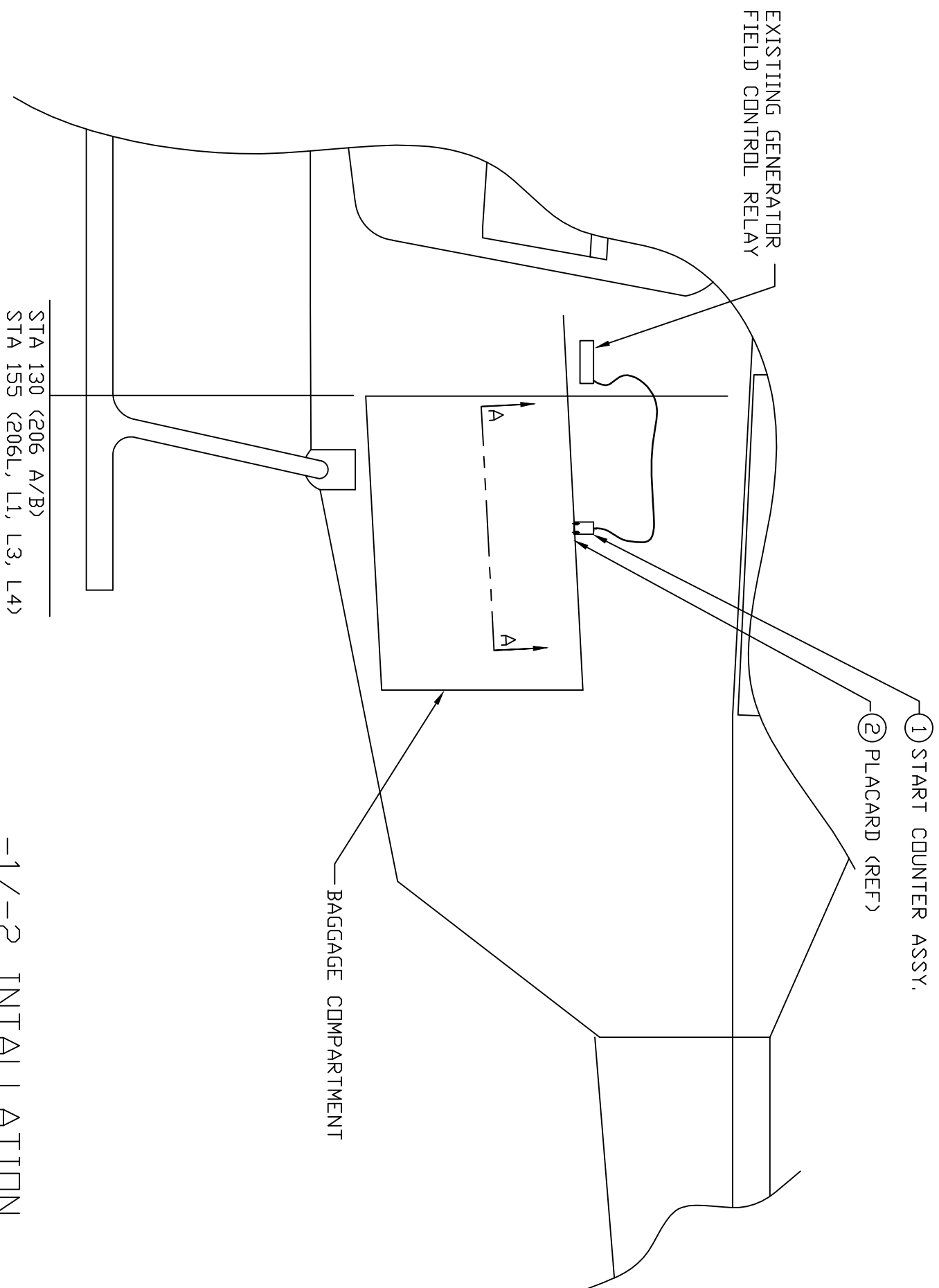
Bill of Materials

--

ITEM #	P/N	DESCRIPTION	QTY	TYP
0	*206SC-100-1, REV. N/C	START COUNTER CONFIGURATION	1	KIT
1	206SC-200-1/-2	START COUNTER INSTN	1	EA

INSTALLATION	AIRCRAFT EFFECTIVITY
206SSC-200-1	206A/B S/N 4 THRU 4310
206SSC-200-2	206A/B S/N 4311 AND SUB. AND 206L, L1, L3, L4

SHEET	REV	ECD	DATE	DESCRIPTION	BY	APR	CHK
1,4,5	N/C	1	09/22/2010	-2 CIRCUIT SHOWED COUNTER GND TO X1, CORRECTED TO X2 (K2A22) AT FIELD IGNITER RELAY. ADDED WIRE P/N'S TO ASSURE CLARITY.			



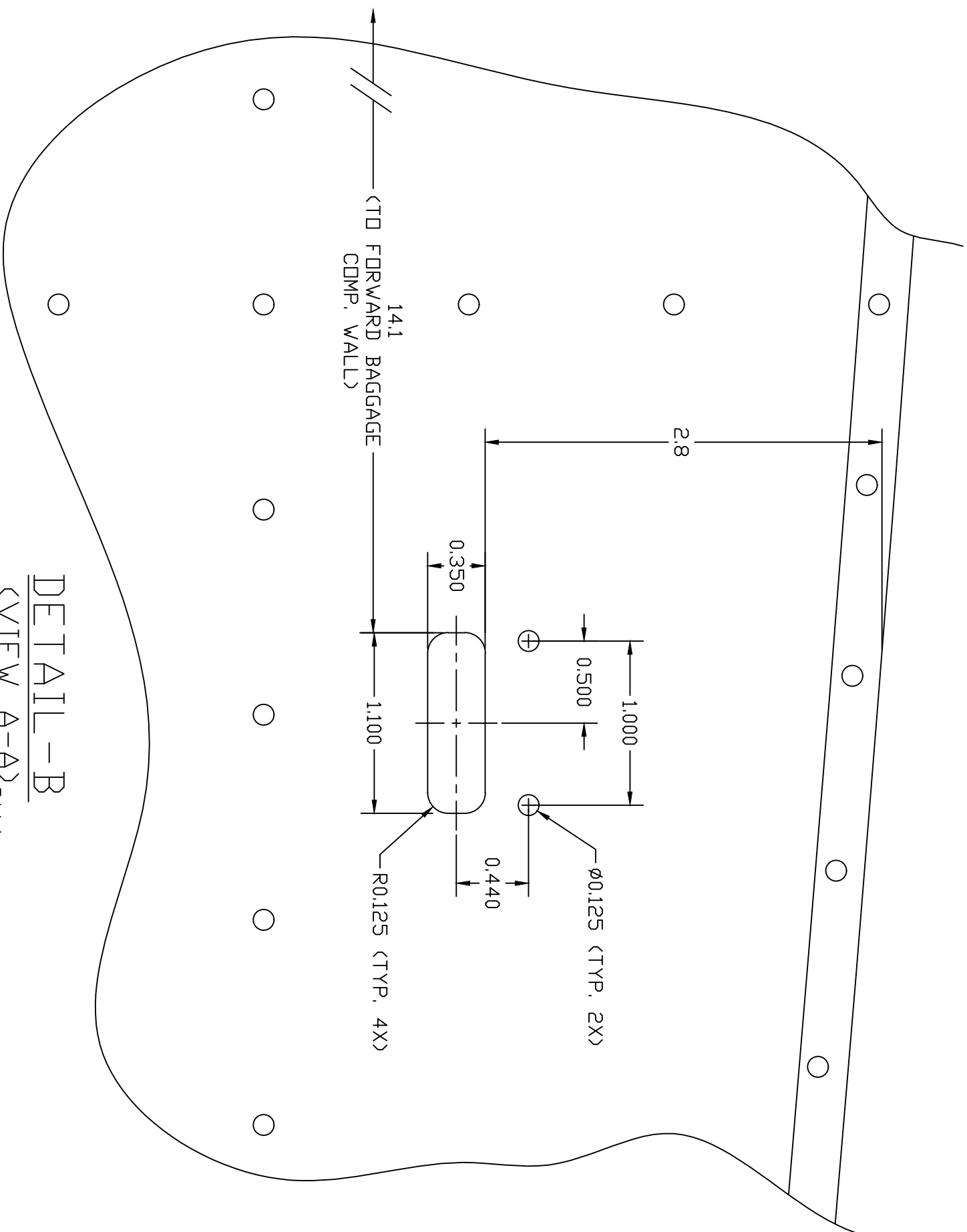
-1/-2 INSTALLATION

-CONFIDENTIAL INFORMATION-
THE INFORMATION AND DATA CONTAINED HEREIN IS PROPRIETARY AND IS SUBMITTED IN CONFIDENCE. AND SHALL NOT BE DISCLOSED, USED OR DUPLICATED FOR ANY PURPOSE WHATSOEVER WITHOUT THE PRIOR WRITTEN PERMISSION OF PARAVION TECHNOLOGY, INC.

Paravion® Inc.	TITLE	DRAWING NO.
Technology	START COUNTER INSTALLATION	206SSC-200
DIMENSIONS IN INCHES		
TOLERANCES EXCEPT WHERE NOTED:		
.X	= ± .1	
.XX	= ± .05	
.XXX	= ± .010	
ANGLES	= ± 1°	
PROTO	1	
DRAWN BY GP	APRVD. BY GP	CHK'D BY LS
DATE	12/31/02	
REV	N/C	ECO
1		1
DO NOT SCALE DRAWING		SHEET
© 2000 PARAVION TECH., INC. PARAVION IS A TRADEMARK OF PARAVION TECHNOLOGY, INC.		1 OF 5

NOTES:
1. MODIFY TOP OF BAGGAGE COMPARTMENT AS SHOWN.

ECO	SHEET	REV	DATE	DESCRIPTION	APR	CHK



-1/-2 INSTALLATION

DETAIL-B
(VIEW A-A) SH.1

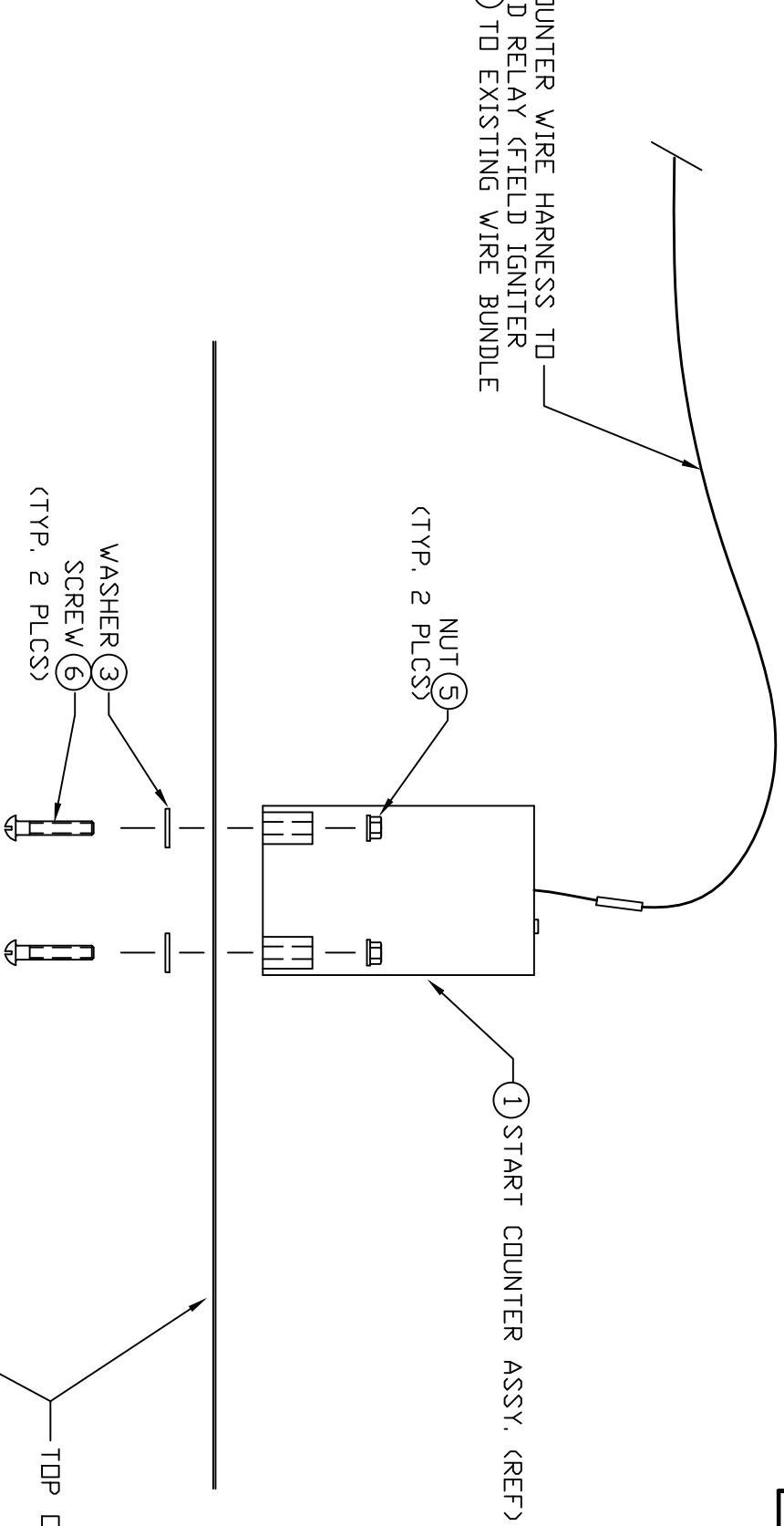
BREAK ALL SHARP EDGES

-CONFIDENTIAL INFORMATION-
THE INFORMATION AND DATA CONTAINED HEREIN IS PROPRIETARY AND IS SUBMITTED IN CONFIDENCE. AND SHALL NOT BE DISCLOSED, USED OR DUPLICATED FOR ANY PURPOSE WHATSOEVER WITHOUT THE PRIOR WRITTEN PERMISSION OF PARAVION TECHNOLOGY, INC.

PROTO	1	Paravion® Inc. Technology		TITLE START COUNTER INSTALLATION	DRAWING NO. 206SC-200
DIMENSIONS IN INCHES		DRAWN BY GP	APPRVD. BY ECO	CHK'D BY	DATE 12/31/02
TOLERANCES EXCEPT WHERE NOTED:		DO NOT SCALE DRAWING		DATE	REV N/C
.X	= ± .1				ECO
.XX	= ± .05				
.XXX	= ± .010				
ANGLES	= ± 1°				
		© 2000 PARAVION TECH, INC. PARAVION IS A TRADEMARK OF PARAVION TECHNOLOGY, INC.		SHEET	2 OF 5

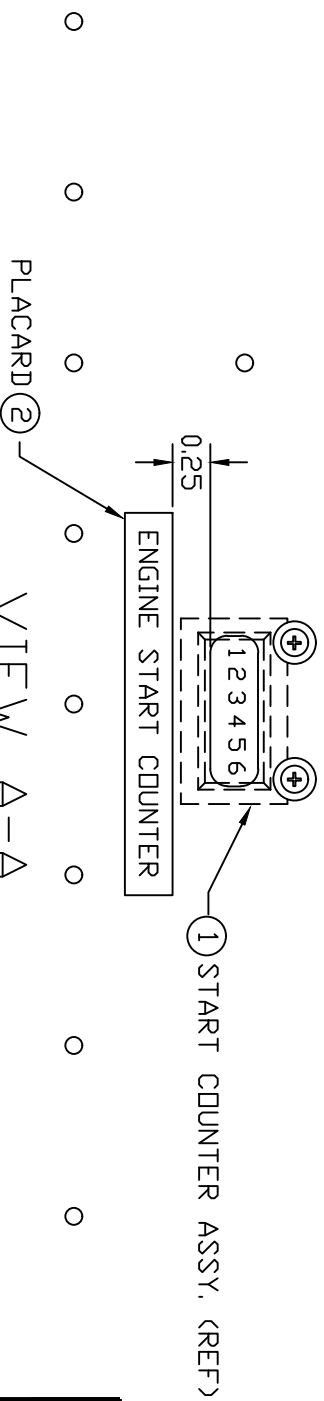
ECD	SHEET	REV	DATE	DESCRIPTION	APR	CHK

ROUTE START COUNTER WIRE HARNESS TO GENERATOR FIELD RELAY (FIELD IGNITER RELAY) TYRAP ④ TO EXISTING WIRE BUNDLE AS NECESSARY.



TOP OF BAGGAGE COMPARTMENT

-1/-2 INSTALLATION



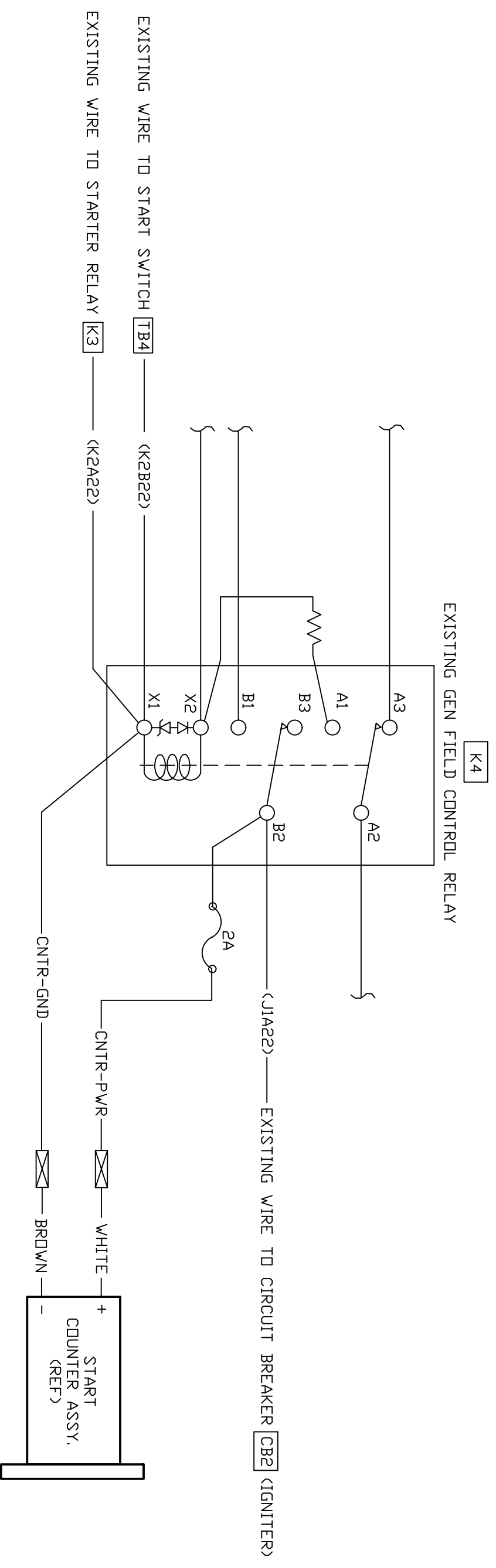
VIEW A-A SH:1

THE INFORMATION AND DATA CONTAINED HEREIN IS PROPRIETARY AND IS SUBMITTED IN CONFIDENCE. AND SHALL NOT BE DISCLOSED, USED OR DUPLICATED FOR ANY PURPOSE WHATSOEVER WITHOUT THE PRIOR WRITTEN PERMISSION OF PARAVION TECHNOLOGY, INC.

-CONFIDENTIAL INFORMATION-

Paravion® Inc. Technology	TITLE START COUNTER INSTALLATION	DRAWING NO. 206SC-200
DIMENSIONS IN INCHES TOLERANCES EXCEPT WHERE NOTED: .X = ± .1 .XX = ± .05 .XXX = ± .010 ANGLES = ± 1°		DRAWN BY: GP APPROVD. BY: ECO CHK'D BY: DATE: 12/31/02 DO NOT SCALE DRAWING
PROTO 1	SHEET 3 OF 5	REV N/C

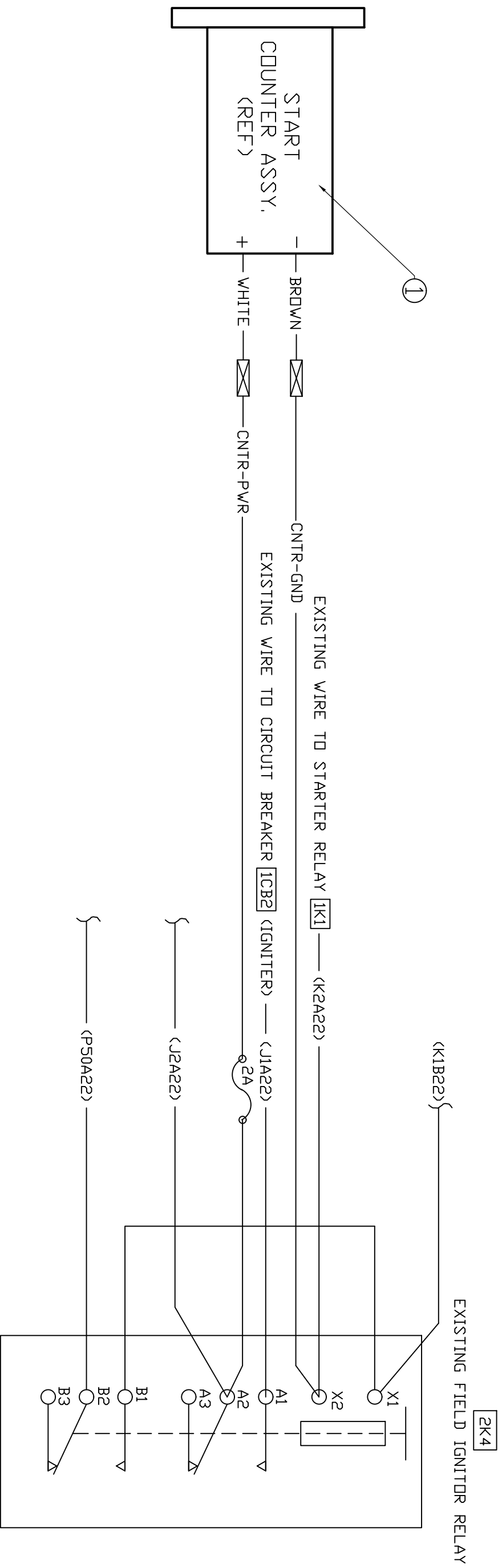
© 2000 PARAVION TECH, INC. PARAVION IS A TRADEMARK OF PARAVION TECHNOLOGY, INC.



-1 INSTALLATION
 WIRING DIAGRAM
 HELICOPTERS 206A/B S/N 4 THRU 4310

Paravion® Inc. Technology		TITLE START COUNTER INSTALLATION		DRAWING NO. 206SC-200	
DIMENSIONS IN INCHES TOLERANCES EXCEPT WHERE NOTED: .X = ± .1 .XX = ± .05 .XXX = ± .010 ANGLES = ± 1°		DRAWN BY GP	APPRVD. BY GP	CHK'D BY GP	DATE 12/31/02
DO NOT SCALE DRAWING		REV N/C	ECO 1	SHEET 4 OF 5	
PROTO		© 2000 PARAVIION TECH, INC. PARAVIION IS A TRADEMARK OF PARAVIION TECHNOLOGY, INC.			

CONFIDENTIAL INFORMATION-
 IS PROPRIETARY AND IS SUBMITTED IN CONFIDENCE;
 AND SHALL NOT BE DISCLOSED, USED OR DUPLICATED
 FOR ANY PURPOSE WHATSOEVER WITHOUT THE PRIOR
 WRITTEN PERMISSION OF PARAVIION TECHNOLOGY, INC.



-2 INSTALLATION
WIRING DIAGRAM
HELICOPTERS 206A/B S/N 4311 AND SUB.
AND HELICOPTERS 206L, L1, L3, L4

CONFIDENTIAL INFORMATION-
THE INFORMATION AND DATA CONTAINED HEREIN
IS PROPRIETARY AND IS SUBMITTED IN CONFIDENCE;
AND SHALL NOT BE DISCLOSED, USED OR DUPLICATED
FOR ANY PURPOSE WHATSOEVER WITHOUT THE PRIOR
WRITTEN PERMISSION OF PARAVION TECHNOLOGY, INC.

Paravion® Inc. Technology	TITLE	DRAWING NO.
	START COUNTER INSTALLATION	206SC-200
DIMENSIONS IN INCHES		
TOLERANCES EXCEPT WHERE NOTED:		
.X	= ± .1	
.XX	= ± .05	
.XXX	= ± .010	
ANGLES	= ± 1°	
PROTO		
DRAWN/APPVD/CHK'D BY	DATE	REV
GP	12/31/02	N/C
ECO	09/22/2010	1
DO NOT SCALE DRAWING		SHEET
© 2000 PARAVION TECH, INC. PARAVION IS A TRADEMARK OF PARAVION TECHNOLOGY, INC.		5 OF 5